

Demographic Summary Report

Bldg 2

179 I-45 South, Huntsville, TX 77340

Building Type: **General Retail** Total Available: **0 SF**
 Secondary: - % Leased: **100%**
 GLA: **4,095 SF** Rent/SF/Yr: -
 Year Built: **1994**



Radius	1 Mile	3 Mile	5 Mile
Population			
2017 Projection	6,145	36,355	44,602
2012 Estimate	5,972	34,503	42,291
2010 Census	5,924	33,504	41,100
Growth 2012 - 2017	2.90%	5.40%	5.50%
Growth 2010 - 2012	0.80%	3.00%	2.90%
2012 Population by Hispanic Origin	920	7,326	8,376
2012 Population By Race	5,972	34,503	42,291
White	4,126 69.09%	20,751 60.14%	26,794 63.36%
Black or African American	1,117 18.70%	9,133 26.47%	10,219 24.16%
American Indian and Alaska Native	24 0.40%	146 0.42%	179 0.42%
Asian	125 2.09%	479 1.39%	539 1.27%
Native Hawaiian and Pacific Islander	4 0.07%	19 0.06%	29 0.07%
Other Race	438 7.33%	3,140 9.10%	3,548 8.39%
Two or More Races	137 2.29%	834 2.42%	983 2.32%
Households			
2017 Projection	2,724	11,324	14,293
2012 Estimate	2,636	10,521	13,311
2010 Census	2,608	10,078	12,795
Growth 2012 - 2017	3.40%	7.60%	7.40%
Growth 2010 - 2012	1.10%	4.40%	4.00%
Owner Occupied	858 32.55%	3,052 29.01%	5,273 39.61%
Renter Occupied	1,778 67.45%	7,469 70.99%	8,038 60.39%
2012 Households by HH Income	2,636	10,512	13,302
Income Less Than \$15,000	594 22.53%	2,911 27.69%	3,276 24.63%
Income: \$15,000 - \$24,999	290 11.00%	1,646 15.66%	1,896 14.25%
Income: \$25,000 - \$34,999	542 20.56%	1,981 18.85%	2,448 18.40%
Income: \$35,000 - \$49,999	360 13.66%	1,331 12.66%	1,760 13.23%
Income: \$50,000 - \$74,999	405 15.36%	1,164 11.07%	1,727 12.98%
Income: \$75,000 - \$99,999	236 8.95%	628 5.97%	964 7.25%
Income: \$100,000 - \$149,999	140 5.31%	616 5.86%	857 6.44%
Income: \$150,000 - \$199,999	46 1.75%	137 1.30%	216 1.62%
Income: \$200,000+	23 0.87%	98 0.93%	158 1.19%
2012 Avg Household Income	\$45,657	\$40,822	\$44,795
2012 Med Household Income	\$32,383	\$27,736	\$30,188
2012 Per Capita Income	\$20,893	\$16,682	\$17,896

Traffic Count Report

Bldg 2

179 I-45 South, Huntsville, TX 77340

Building Type: **General Retail**

Secondary: -

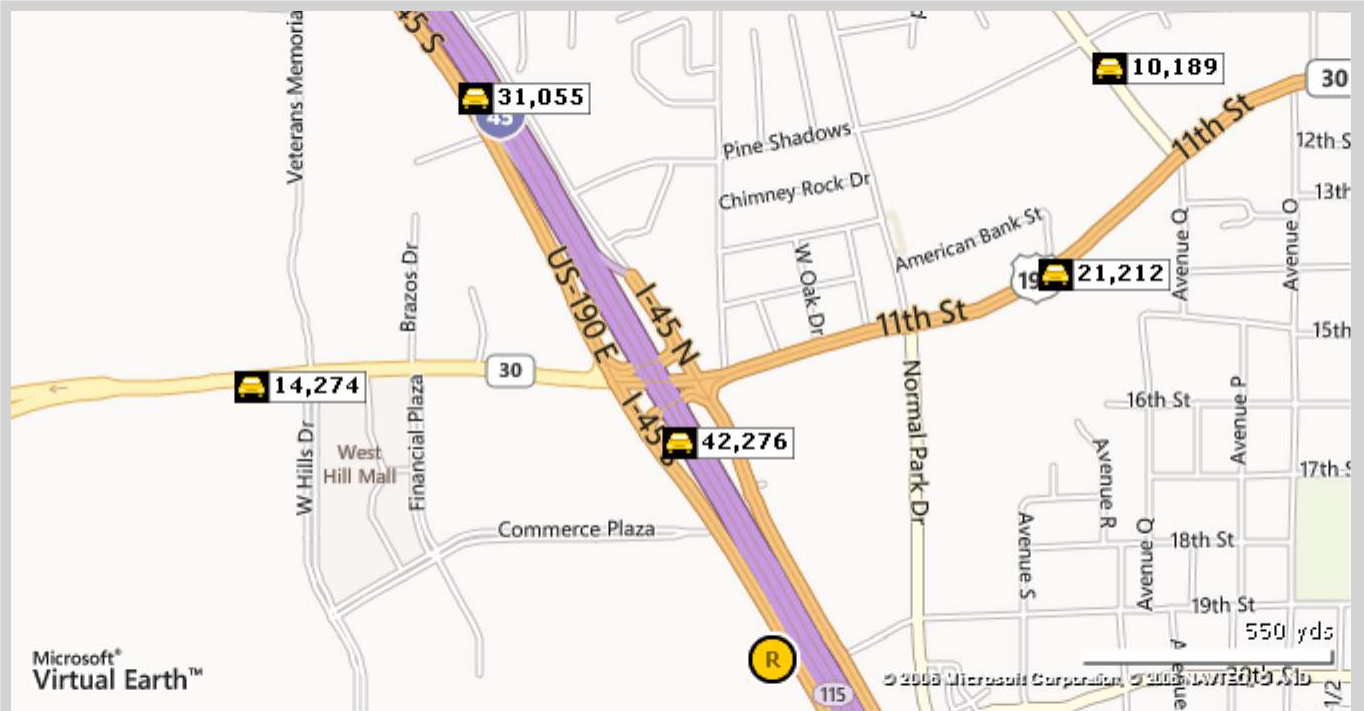
GLA: **4,095 SF**

Year Built: **1994**

Total Available: **0 SF**

% Leased: **100%**

Rent/SF/Yr: -



Street	Cross Street	Cross Str Dist	Count Year	Avg Daily Volume	Volume Type	Miles from Subject Prop
1 I-45	United States Highway 190	0.08 N	2011	42,276	MPSI	.30
2 United States Highway 190	Normal Park Dr	0.19 SW	2011	21,212	MPSI	.61
3 State Highway 30	United States Highway 190	0.50 E	2011	14,274	MPSI	.75
4 I-45	United States Highway 190	0.43 SE	2011	31,055	MPSI	.81
5 Avenue Q	10th St	0.03 NW	2011	10,189	MPSI	.87